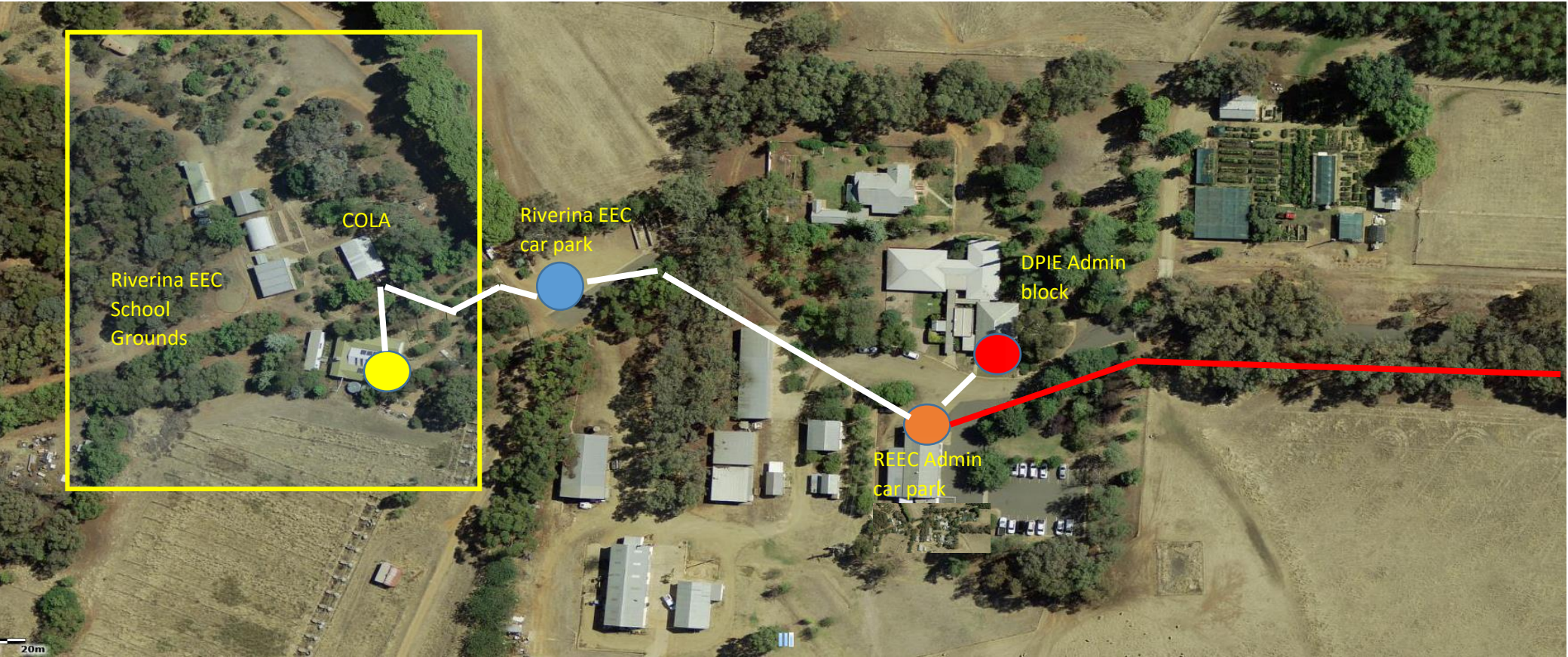







The Covered Outdoor Learning Area is the meeting point for all excursions. This will be referenced as our central point for this map.



Emergency Evacuation Key		Emergency Assembly Point A	Students and staff to assemble for Emergency Evacuation. Follow white line
		Emergency Assembly Point B	Students and staff to assemble for Bushfire Evacuation. Follow white Line
		Emergency Shelter Point A	Students and staff to assemble in Greenwood centre for shelter
		Emergency Shelter Point B	Students and staff to seek shelter in DPIE building from bushfire
		Emergency Assembly Point C	Buses to transport staff and students to Ashmont Public School for Emergency Evacuation.

Riverina EEC Study locations at Wagga Research Centre

